

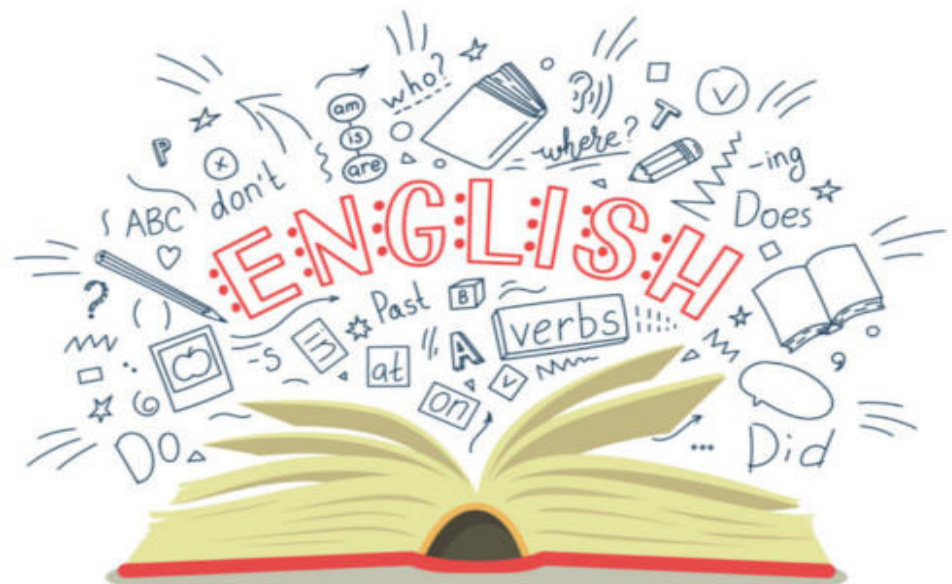


# Mount St Mary's Catholic High School

Educating The Individual For The Benefit Of All

## The importance of GCSE English

Achieving a grade 4 or above in GCSE English Language is a requirement for the majority of post 16 courses and for many careers as it is so rich in transferable skills and knowledge. It is therefore vitally important that you achieve well in English. The knowledge, skills and understanding of the world, society and culture, past and present, gained during the study of both GCSE English Language and Literature, is relevant to every aspect of our lives and all further study and career paths, not only to students who go on to study A-level English Language or Literature. During KS4 in English, you will not only enjoy developing your critical thinking skills when reading and analysing a wide range of plays, poems, novels and non-fiction texts, you will enhance your creativity, improve your reading, writing and spoken language skills and develop an extensive vocabulary, so that you can leave Mount St Mary's as a powerful and confident communicator - a skill which is an advantage in every aspect of our lives and in every potential career.



## Careers Options

Further study in English Language or English Literature can offer incredible flexibility as the skills and knowledge are so broad and transferable. This includes careers in a whole range of industries, including in the media, advertising, journalism, education, law, business and of course, a career as a professional writer.

GCSE English

## What you will study

When studying English Language and English Literature, students will be exposed to a wide range of culturally rich fiction and non-fiction texts which span the most important and influential eras and writers in literary history. This includes the study of plays and prose from the Jacobean and Victorian era as well as contemporary prose and drama so that students are equipped with the knowledge, skills and cultural capital needed to be successful beyond Mount St Mary's.

Students study the AQA GCSE English Language and English Literature courses with the content and skill of English Language interleaved with the teaching of our chosen Literature texts, which include 'An Inspector Calls', 'A Christmas Carol', 'Power and Conflict' poetry and Shakespeare's 'Macbeth'. The KS4 curriculum is also underpinned by the use of comprehensive exam rubrics in English Language and Literature so that students understand all elements of the exams such as the exam questions, assessment objectives and criteria, examiner reports, exemplar answers and strategic advice and tips for success in each exam question, to ensure all students develop excellent knowledge of the assessments and can approach all exams with confidence.



## How is the subject assessed?

---

### ***GCSE English Language (2 written exams):***

- Paper 1: Explorations in Creative Reading and Writing – 1hr 45 minutes
- Paper 2: Writers' Viewpoints and Perspectives – 1hr 45 minutes

Spoken Language Component (reported as a separate grade of Pass, Merit or Distinction which does not contribute to the overall grade awarded in English Language)

### ***GCSE English Literature (2 written exams):***

- Paper 1: Shakespeare and the 19th Century Novel – 1hr 45 minutes
- Paper 2: Modern Texts and Poetry – 2hrs 15 minutes

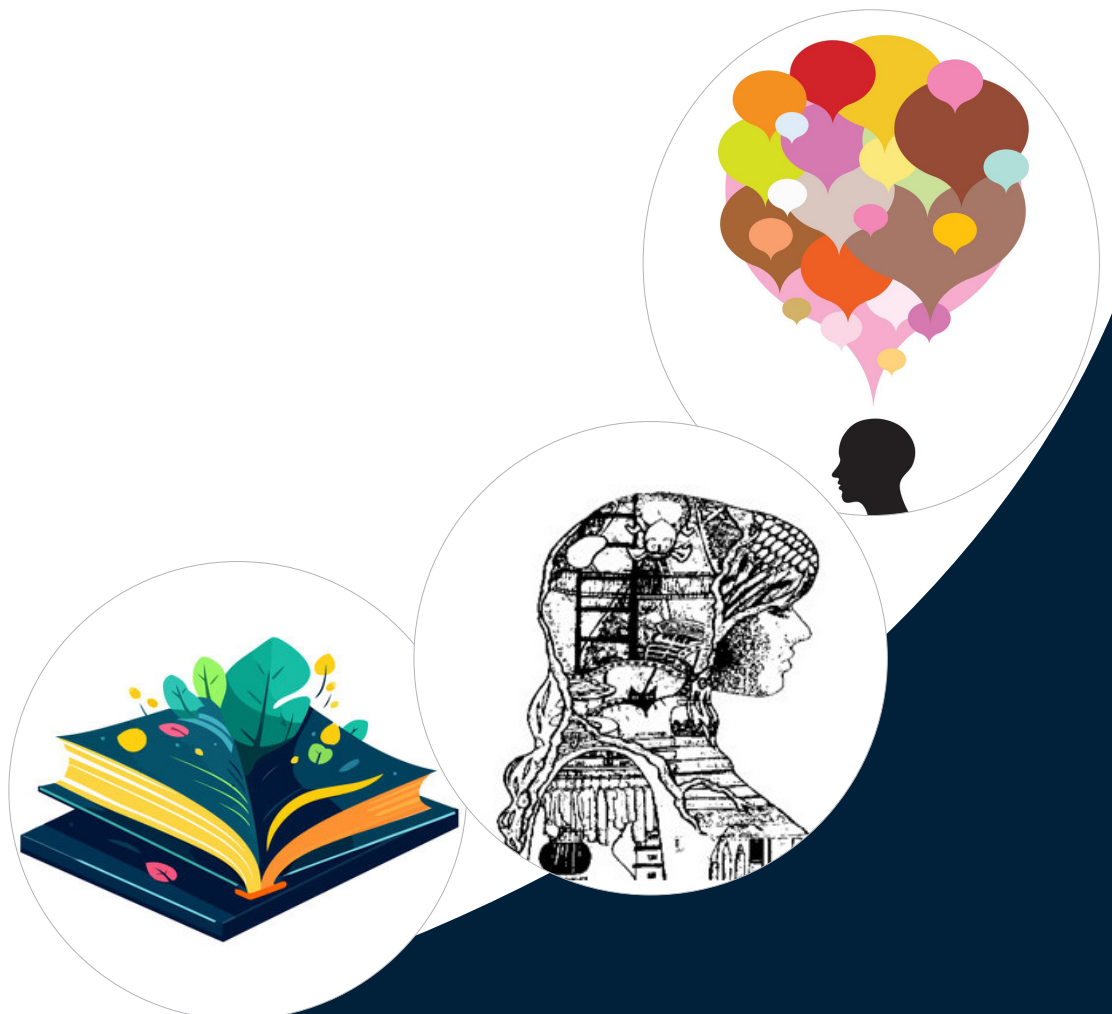
[see overleaf for a detailed outline of the content of each exam paper]

## For further information contact:

---

M. Lisgo (Joint Curriculum Lead - English) - [m.lisgo@mountstmarys.org](mailto:m.lisgo@mountstmarys.org)

N. Rathore (Acting Joint Curriculum Lead - English) - [n.rathore@mountstmarys.org](mailto:n.rathore@mountstmarys.org)



## Breakdown of Exam Papers

# English Language

### AQA Paper 1

Section A Reading

Read the fiction text carefully before starting Q1.

A01 Q1 List four things about... 5 4 marks

A02 Q2 How does the writer use language to...? 10 8 marks

A02 Q3 How does the writer structure the text to interest the reader? 10 8 marks

A04 Q4 A student said: [statement given]  
To what extent do you agree with this statement? 20 20 marks

Section B Writing 40 marks

A05 Q5 Your school or college is asking students to contribute some creative writing for its website.

A06 Either: Describe ... as suggested by this picture.  
or: Write a story about ... .

45 Plan 5 Proof-read 5

### AQA Paper 2

Section A Reading

Read both non-fiction texts carefully before starting Q1.

A01 Q1 Choose four statements which are true 5 4 marks

A01 Q2 Use details from both sources to write a summary of.. 10 8 marks

A02 Q3 How does the writer use language to...? 15 12 marks

A03 Q4 Compare how the writers convey their different attitudes and perspectives / feelings about... 20 16 marks

Section B Writing 40 marks

A05 Q5 Statement: "....."

A06 Write a letter / speech / article in which you argue your point of view in response to this statement.

45 Plan 5 Proof-read 5

## AQA English Literature

Paper 1 1hr 15mins		Paper 2 2hrs 15mins	
Q1	Section A: <i>Macbeth</i> by William Shakespeare 50 30 + 4 marks	Q1	Section A: <i>An Inspector Calls</i> by J.B. Priestley 45 30 + 4 marks
Q2	Section B: <i>A Christmas Carol</i> by Charles Dickens 45 30 marks	Q2	Section B: <i>Power and Conflict</i> poetry 45 30 marks
		Q3	Section C: Unseen poetry (1 x poem) 30 24 marks
		Q4	Section C: Unseen poetry (compare) 10 8 marks